

**Gran-Segel® & PNP Leech Line Cleats**

Part No	Ref	Length in mm	Width in mm	Line size in mm
HLGS1	Gran No1	30mm	20mm	1 - 2.5mm

Part No	Description
HPNP177	1-2mm leech line cleat
HPNP178	3-5mm leech line cleat

HPNP25A	closed leech line cleat
---------	-------------------------



**Erne Born Cleats**

Part No	Ref	Length in mm	Line size in mm
R2215-01	Medium No 2	43mm	2-4mm
R2215-02	Large No 3	58mm	3-6mm



**Clam-Cleat® Rope Cleats**

Dinghy leech line cleat White Nylon. To suit line up to 3mm

Part No	Component
HLCL 221	Complete with rivets and backing plate



Leech line cleat White Nylon. To suit line from 2 to 5mm Mount starboard.

Part No	Component
HLCL 212	Cleat only
HLCL 212BP	Backing plate



Leech line cleat White Nylon To suit line from 2 to 5mm. Mount port.

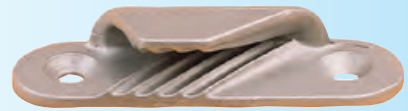
Part No	Component
HLCL 214W	Cleat only
HLCL 212BP	Backing plate



## Clam-Cleat® Rope Cleats

Aluminium racing cleat. To suit line from 3 to 6mm. Mount starboard.

Part No	Component
HLCL 258	Cleat only Silver
S432-021R	Cleat only Black
HLCL 212BP	Backing plate



HLCL 258 / 259

Aluminium racing cleat. To suit line from 3 to 6mm. Mount port.

Part No	Component
HLCL 259	Cleat only Silver
S432-022R	Cleat only Black
HLCL 212BP	Backing plate



HLCL 233

Sail line cleat White Nylon. To suit line from 3 to 6mm. Mount starboard, hand sew to sail.

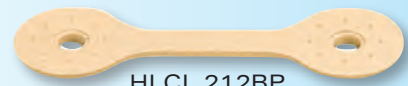
Part No	Component
HLCL 233	Cleat only
HLCL 233BP	Backing Plate



HLCL 241 / 273

Aluminium racing cleat. To suit line from 3 to 6mm. Mount port.

Part No	Component
HLCL 241	Cleat only Silver (S432-033R for black version)
HLCL 212BP	Backing plate



HLCL 212BP

Aluminium racing cleat. To suit line from 3 to 6mm. Mount starboard.

Part No	Component
HLCL 273	Cleat only Silver (S432-034R for black version)
HLCL 212BP	Backing plate



HLCL 212A

Backing Plate for use with CL 212, CL 214, CL 258, CL 259, CL241 & CL273

Part No	Component
HLCL 212BP	Backing Plate

Cleat Cover for use with CL 212.

Part No	Component
HLCL 212A	Cleat cover

## Clam-Cleat® Sail Edge Cleats

Semi-flexible sides make it easy to fit to the sail. Adjust from either side of the sail. Smooth profile - snag free. Strong and impact resistant. Nylon or Alloy Cleats available. Ideal for lower load applications. To suit line from 1- 4mm.

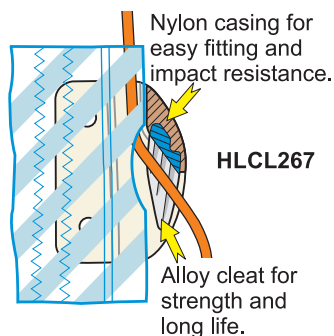
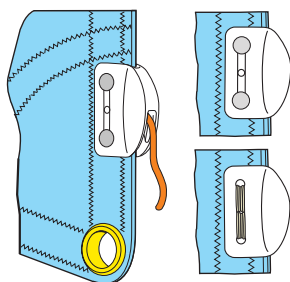
Part No	Component
HLCL 267	Racing Sail Edge Cleat
HLCL 269	Sail Edge Cleat



HLCL 267



HLCL 269



**Swedish™ Piston Hanks, HPNP Small Piston Hank & Bronze Jib**

Swedish brass forged Piston Hanks are recognised worldwide for reliability and consistent quality.

Part No	Size No	Overall length in mm	Max forestay in mm
HLHK 5040	No0	40mm	8mm
HLHK 5050	No1	50mm	9mm
HLHK 5060	No2	60mm	12mm
HLHK 5070	No3	70mm	15mm
HLHK 5080	No4	80mm	17mm
HLHK 5090	No5	90mm	20mm

Part No	Description
HPNP 88AK	Glass/Carbon/Kevlar Hank 6mm or 1/4" wire
HLSR72483	WICHARD BRONZE JIB 55mm / 9mm
HLSR72486	WICHARD BRONZE JIB 50mm / 7.5mm
HLSR72487	WICHARD BRONZE JIB 65mm / 11mm



HLHK 5040



HPNP88AK



HLSR72483

**Rutgerson RONDO® - Chafe Protectors**

- >> The Rutgerson Rondo will save your sails and make your sailing much easier.
- >> Clip-On system - The Rondo is pre-drilled to fit 6mm wire, but fit up to 11mm wire, just re-drill to required diameter of hole.
- >> On life lines - Place one Rondo in front of each stanchion and Rondo® helps the foot of the genoa roll over the life lines. Keeping the crew off foredeck when tacking.
- >> On shrouds close to spreaders - A Rondo above each spreader protects the mainsail and genoa from chafe on spreader ends.
- >> On upper part of backstay, when sailing with a fully battened mainsail - Rondo® helps the upper leech of fully battened mainsails past the backstay, and so reduces chafe.
- >> On inner forestay - Rondo makes tacking around an inner forestay quicker & easier.
- >> One unit consists of two identical pieces.

Part No	Colour	Outer diameter of Rondo in mm
R1800	White only	70mm



**Sail Hank High Load (Alloy)**

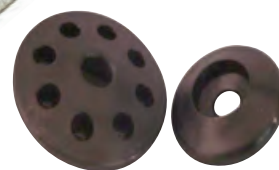
Note: Matching parts should be rounded, smooth, and with no sharp edges or burrs. Dyneema and Polyester webbing are both coated with an UV coating, recoat when worn for long life. It is recommended that webbing should be replaced when worn. Use High load Hanks for top and bottom connections. Perfect for Composite stays.

Part No	Inner Ø (mm)	Outer Ø (mm)	MWL (kg)	WT(g)
SH05	7.5	20	1.500	3
SH06	9	24	2.000	9
SH08	12.5	33	2.500	15
SH010	15.5	41	3.500	30
SH012	21	58	6.000	71

Note: SWL with Dyneema webbing. Hanks delivered without webbing.



HIGH LOAD ALLOY



LOW LOAD REINFORCED PLASTIC

**Sail Hank Low Load (Reinforced Plastic)**

Part No	Inner Ø (mm)	Outer Ø (mm)	MWL (kg)	WT(g)
23HM	7.5	20	1.500	3
33HM	9	24	2.000	9
44HM	12.5	33	2.500	15
57HM	15.5	41	3.500	30

Note: MWL with polyester webbing. Hanks delivered without webbing.

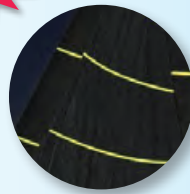


## Luminous Draft Stripes and Spinnaker V Tapes



A must for any serious offshore sailor. Racing or Cruising. Note, these adhesive backed tapes may need stitching depending on the application.

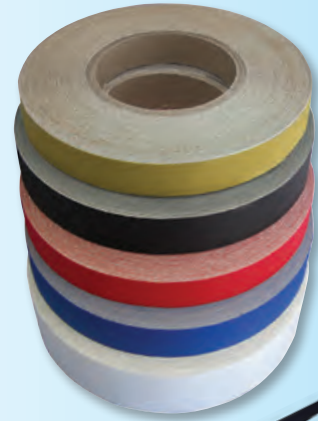
Part No	Description	Sold by
HGF030STC	Luminous Draft Stripe 30mm wide x 25m	Roll
HGF065STC	Luminous Draft Stripe 65mm wide x 25m	Roll
HGF030V	Luminous Spinnaker V 30mm wide x 25m	Roll
HGF065V	Luminous Spinnaker V 65 mm wide x 25m	Roll



## Polyester Draft Stripe & Insignia Wave Tapes

These tapes are adhesive backed used in the manufacturing of new sails and repair of used sails. Our tapes are cut from Captain Insignia, a trusted brand for many years.

Part No	Colour	Width
TD10005	White	1/2"
TD100075	White	3/4"
TD1001	White	1"
TD1015	White	1 1/2"
TD1002	White	2"
TD1003	White	3"
TD1004	White	4"
TD1005	White	5"
TD1006	White	6"
TD1(x)005	Red 1, Blue 2 & Black 8	1/2"
TD1(x)075	Red 1, Blue 2 & Black 8	3/4"
TD1(x)01	Red 1, Blue 2 & Black 8	1"
TD1(x)02	Red 1, Blue 2, Black 8 & Gold 10	2"
TD1(x)025	Red 1, Blue 2, Black 8	2 1/2"
TD1(x)03	Red 1, Blue 2, Black 8 & Gold 10	3"
TD18WAVE1	Black	Pitch 360mm, height 21mm, width 55mm, length 11.98m
TD18WAVE2	Black	Pitch 360mm, height 27mm, width 105mm, length 11.98m



Wave Tapes can be supplied in any width and any Insignia colour.

## (Spinnaker) Repair Tape

Self adhesive for quick repairs, on 7.5 metre long rolls. Other colours available on special order.

Part No	Width	Colour
HCIRN	50mm	White
HCIRP	50mm	Pink
HCIRR	50mm	Red
HCIRY	50mm	Yellow
HCIRG	50mm	Green
HCIRB	50mm	Dark Blue



## Pre-Cut Sail Numbers using Captain White, Red, Blue, Black, Gold, Grey, Green & FL Orange

We can offer special cutting services such as class legal letters and numbers and class-logos from any Insignia colour.

### Size (inches) 10, 12, 15, 18

- Laser & ILCA 4.7
- Laser & ILCA Radial
- Laser & ILCA Standard
- Optimist



OPTIMIST



## Closed Cell Foam

Contender's closed cell foam is ideally suited to padded luffs of furling genoas. Contender applied adhesive offers piece of mind against mildew and yellowing.

Part No	Description	Roll Length (metres)	Width(metres)
TDSHAPE	6mm Closed cell foam	50mts	1.0m



Slit Sailcloth Tape

Fibercon Tapes

PART NO.	WEIGHT OZ	COLOURS			WIDTH
		NATURAL	BLACK	COOL GREY (NEW)	
TD4010	4oz	✓	-	-	1"
TD4015	4oz	✓	-	-	1.5"
TD4020	4oz	✓	✓	-	2"
TD4025	4oz	✓	✓	-	2.5"
TD4030	4oz	✓	✓	-	3"
TD5020	5.38oz	✓	✓	-	2"
TD5025	5.38oz	✓	✓	-	2.5"
TD5030	5.38oz	✓	✓	-	3"
TD5050	5.38oz	✓	✓	-	5"
TD6020	6.38oz	✓	-	-	2"
TD6025	6.38oz	✓	✓	✓	2.5"
TD6030	6.38oz	✓	-	-	3"
TD6040	6.38oz	✓	✓	✓	4"
TD6040 HYBRID	6.68oz	✓	-	-	4"
TD6050 HYBRID	6.68oz	✓	-	-	5"
TD7030	7.38oz	✓	-	-	3"
TD7040	7.38oz	✓	✓	✓	4"
TD7050	7.38oz	✓	-	-	5"
TD8030	8.38oz	✓	-	-	3"
TD8040	8.38oz	✓	-	-	4"
TD8050	8.38oz	✓	-	-	5"

Spinnaker Tapes

STYLE	COLOURS				WIDTH
	NATURAL	RED	DARK BLUE	GREEN	
Nylite 90	✓	-	-	-	2.5"
	✓	-	-	-	3"
Maxilite 150	✓	✓	-	✓	1"
	✓	✓	-	✓	1.5"
	✓	✓	-	✓	2"
	✓	✓	-	✓	3"
Stormlite 210	✓	✓	-	✓	4"
	✓	✓	-	✓	1"
	✓	✓	✓	-	1.5"
	✓	✓	✓	-	2"
4oz Polyester	✓	✓	✓	-	1"
	✓	✓	✓	-	1.5"
	✓	✓	✓	-	2"
	✓	✓	✓	-	2.5"
	✓	✓	✓	-	3"
	✓	✓	✓	-	4"

New Nylite 90 and Maxilite flat tapes.



To gain the greatest benefit from the Fibercon range, we recommend Fibercon Tapes through-out the sail.

Fibercon Tapes are available in all weights and popular sizes.



Teflon Tape

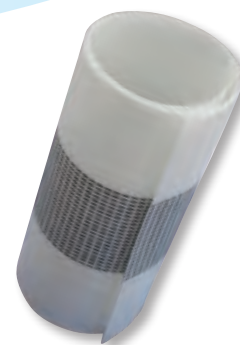
Polyester sailcloth with teflon inserts used for heads of sails for easy hoisting. Available in approx 100 metre rolls.

Part No	Description
TD8050T	5" Wide 8oz Teflon tape

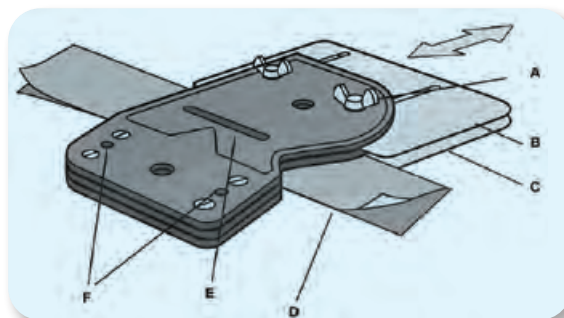
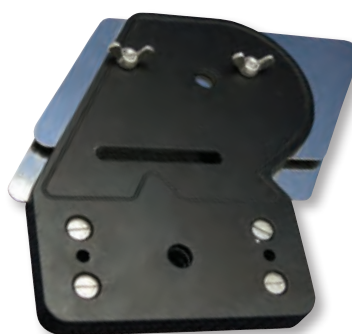
Rutgerson® Tape Folder

Part No	Description
R1650	Rutgerson tape folder

- Loosen the two wing nuts (A). Push the two stainless steel plates outwards as shown.
- Fold & crease half a metre of the tape (D), exactly in the middle, that you want to fold.
- Insert the folded & creased tape into either the top or lower slot. Use the narrow slot for tapes lighter than 280 grams/sqm, and the wider slot for tapes heavier than 280 grams/sqm. The fold should point towards the stainless plate. If necessary you can feed the tape through with a pair of scissors or spike through the open slot (E).
- Push the stainless steel plate in until it butts up snugly against the folded tape. Tighten the wing nuts up.
- Pull the tape straight through the tape folder. To make it easier place the tape folder in a vice or bolt on to a bench using the mounting holes (F).
- Folds up to 5" wide sailcloth tape.



5" Teflon Tape



## Fibercon Luff Tapes

Made from Fibercon AP UV Sailcloth and hard braided polyester cords. Available in 70 - 100m rolls. A sailmakers template swatch as shown available on request, for trying in foil section prior to manufacture.

Part No	Description	Finished Diameter mm	Roll Size
HCPL5	5oz x 5" x 4 mm Luff Rope + BU Rope	4.5	70-100 M
HCPL6	7oz x 5" x 4.5 mm Luff Rope + BU Rope	5	70-100 M
HCPL6BLACK	7oz x 5" x 4.5 mm Luff Rope + BU Rope Black	5	70-100 M
HCPL6.5	PL6 Without BU Rope	5	70-100 M
HCPL7	7oz x 5" x 5.5 mm Luff Rope + BU Rope	7	70-100 M
HCPL8MM	Luff Tape Main 7oz x 8MM PVC Blue	8.15	70-100 M

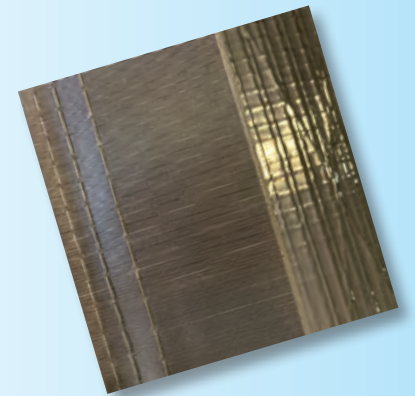
## Luff Tape Application

Part No	Description
HCPL5	Furlex 50S, 104S, Tuff Luff 1205, Harken Carbo foil unit 0, Facnor RC14.
HCPL6 & PL6.5	Furlex 204S, All Harken, Profurl C290 to C430 and R250 to R 430, Tuff Luff 1706 & 2206, Harken Carbo Foil Unit 1 & 2. Norfoil #5, All Scheafer Furlers, Snapfurl 750, Hood Seafurl 253,253.5, 325, 488. Facnor : SX
HCPL7	Furlex 304S, Profurl C260,C520,C530 and R480, Tuff Luff 3007 & 4807, Norfoil 6 & 10, Harken Carbo foil Unit 3, Harken Mark IV 5, 6, 7, 8. Furlex 404S & 504S and Facnor R24, 26, 34.

## Sailmakers Leather

Contender leather comes from a complete hide, making it ideal for jobs requiring long lengths. The finish is smooth one side and suede the other for flexibility of use and comes silver grey in colour in keeping with the modern look. Tough and hard wearing it is the benchmarkers standard for quality and professional finishing to sails.

Part No	Description	Thickness in mm	Size
H26IP	Leather hide	1.5mm - 2.2mm	Average 12 ft 2



HCPL6 Black Luff Tape



2020 5.5 Metre Worlds - RPAYC



Battens

Slides & Cars

Head/Clew Bds.

Rings

Hardware

Tools

Miscellaneous

Materials

Seal/Glide

Index A-Z